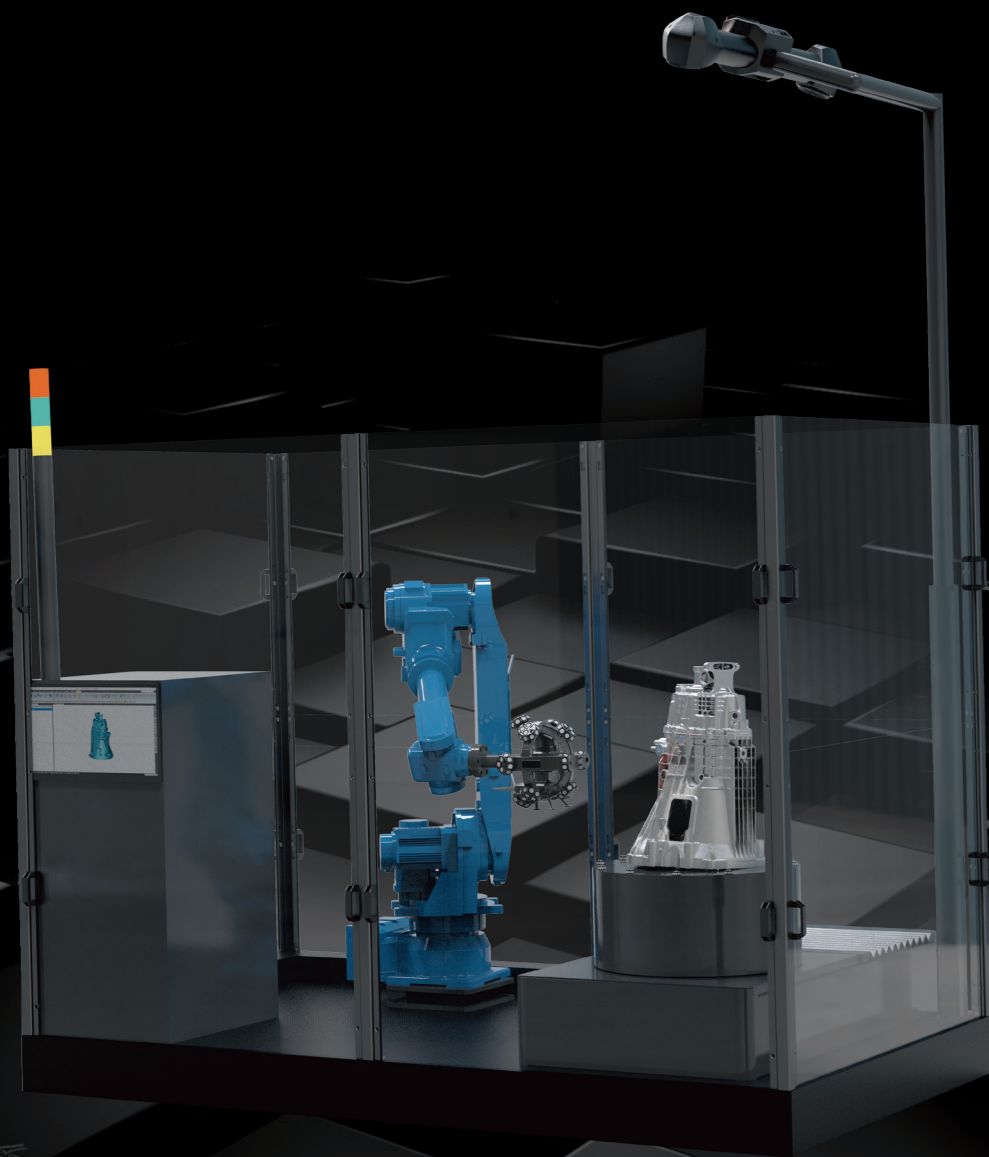
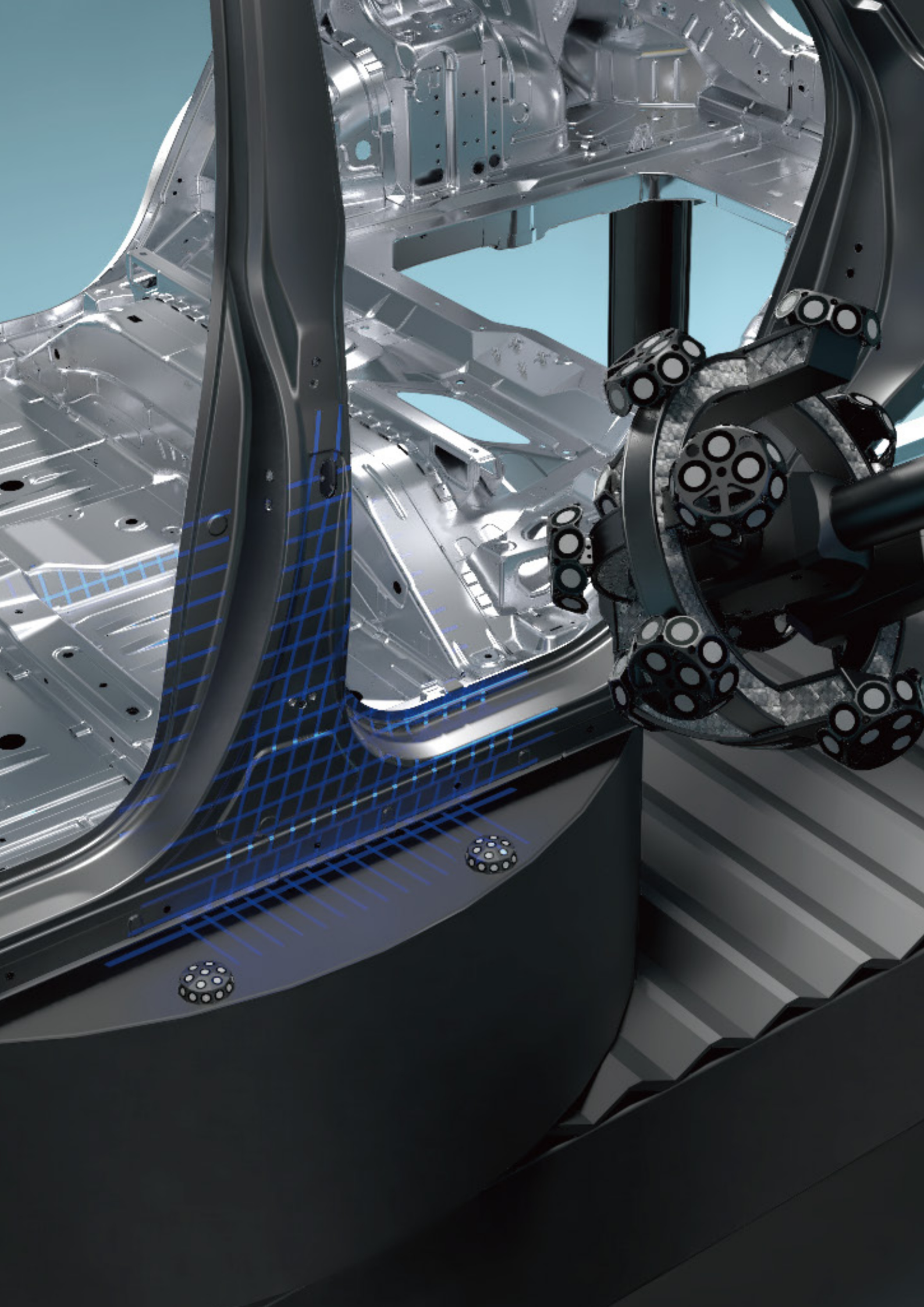


## **AUTOSCAN – T 3D System**

**Optical Automated  
Inspection for Intelligent Production Lines**



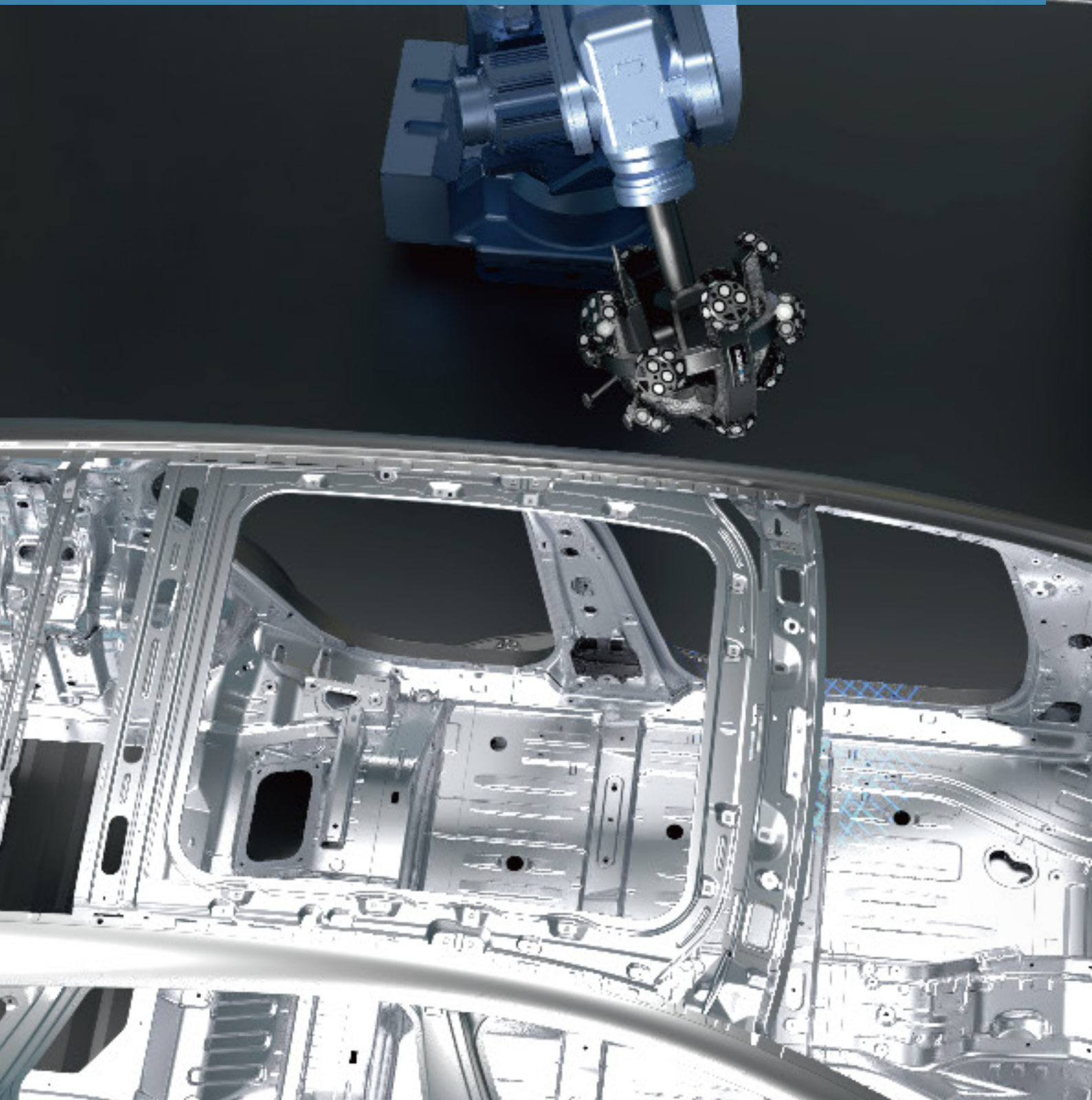




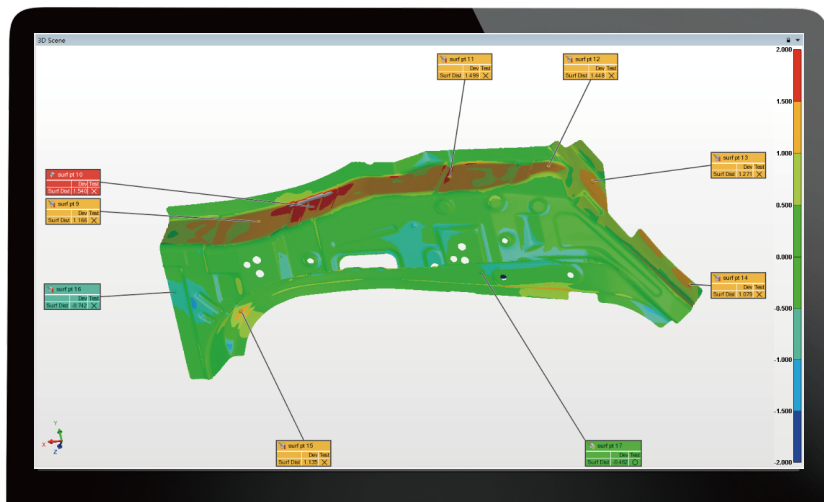
# AUTOSCAN-T

AutoScan-T42 automated 3D system is a new upgrade for intelligent automatic inspection. It is specially designed for automated quality control in shop-floor conditions, facilitating enterprises to achieve the optimum matching between cost and efficiency.

AutoScan-T42 conducts non-destructive scanning without attaching markers. Its seamless connection with production line greatly contributes to the reduction the workload. The military-grade manufacturing quality presents strong anti-interference and high adaptation to complex and harsh workshop environment. It can be extensively used in national defense, energy, 5G, mold manufacturing, etc., users can easily operate the system owing to one-click start, offline programming, and compatibility with 3D software.





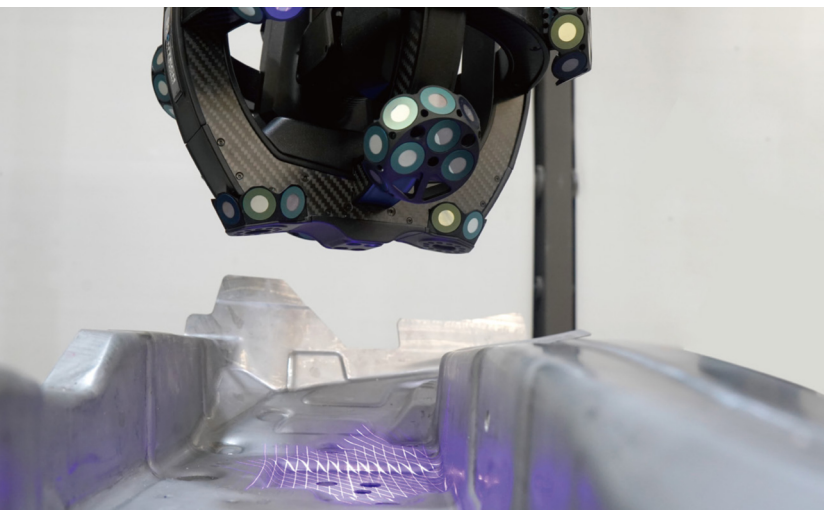


## Work Seamlessly with Production Line

Based on automatic optical tracking and seamlessly integrated into production line, it is designed for online batch inspection and enhances iterative efficiency of the production process greatly.





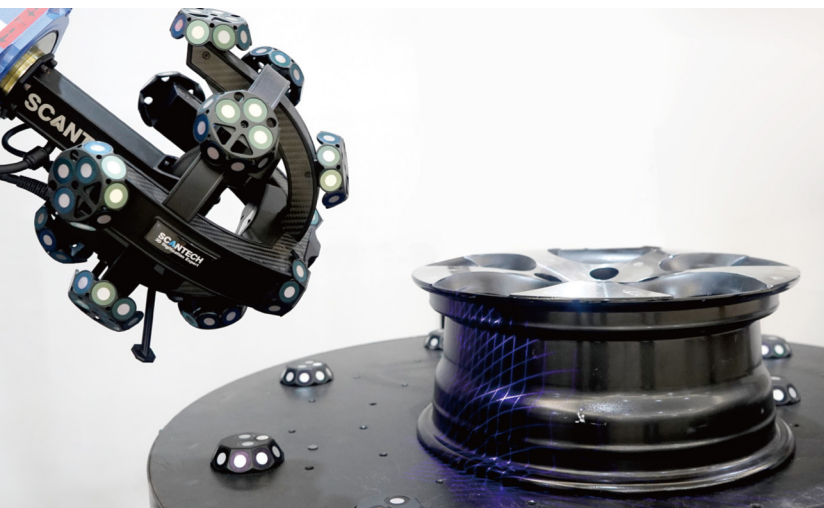
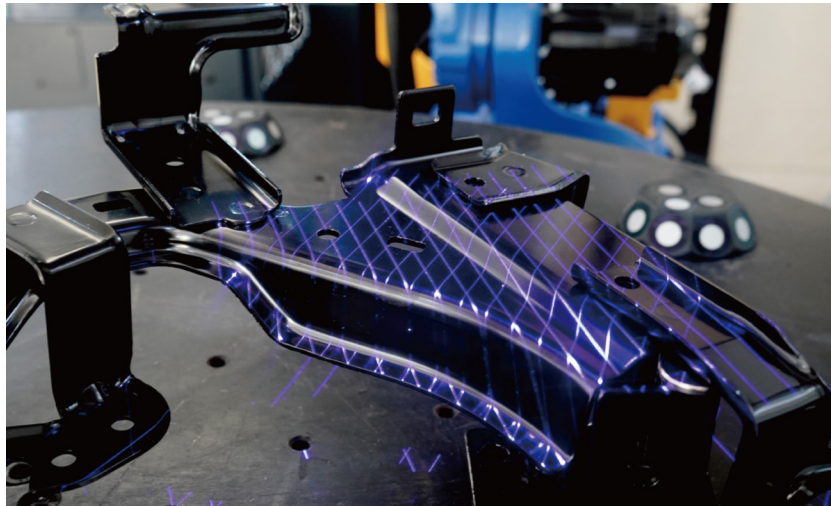


## Multiple Configurations

Conjunction with handheld 3D scanner, portable CMM, MSCAN photogrammetry system, rotary platforms, and guide rails, realize simultaneous optical tracking and scanning and personalized solutions.

## Speed up Precise Inspection

With adoptions of blue laser and synchronous tracking technologies, it reaches up to 1,900,000 measurements/s and accuracy of 0.025 mm. Efficient and flexible automated manufacturing can be achieved without being affected by external factors.



## Military-grade Quality

Being insusceptible to temperature, vibration, dust, etc., the military-grade design presents superior adaptability in harsh industrial environment.

## Simple Operation

Due to one-click start, offline programming and automatically generating inspection, it enables simple operation for users, regardless of their experience, to easily finish the measurement.



## Technical Parameter

Type		AutoScan-T42	AutoScan-T30	AutoScan-T22
Scan mode	Ultra-fast scanning	17 blue laser crosses	11 blue laser crosses	7 red laser crosses
	Hyperfine scanning	7 blue parallel laser lines		
	Deep hole scanning	1 extra blue laser line		
Laser lines in total		42	30	22
Accuracy		0.025 mm		0.030 mm
Measurement rate up to		1,900,000 measurements/s	1,200,000 measurements/s	480,000 measurements/s
Scanning area		310 mm × 350 mm		275 mm × 250 mm
Laser class		CLASSII (eye-safe)		
Resolution		0.020 mm		
Volumetric accuracy	9.1 m <sup>3</sup>	0.064 mm		
	16.6 m <sup>3</sup>	0.078 mm		
Volumetric accuracy (With MSCAN-L15 photogrammetry system)		0.044 mm + 0.015 mm/m		
Part size range (recommended)		200 ~ 6000 mm		
Stand-off distance		300 mm		
Depth of field		320 mm		
Output formats		.stl, .ply, .obj, .igs, wrl, .xyz, .dae, .fbx, .ma, .asc or customized		
Operating temperature range		5 ~ 40°C		
Interface mode		USB 3.0		
Patents		CN204329903U, CN104501740B, CN104165600B, CN204988183U, CN204854633U, CN204944431U, CN204902788U, CN105068384B, CN105049664B, CN204902784U, CN204963812U, CN204902785U, CN204902790U, CN106403845B, CN209197685U, CN209263911U, CN106500627B, CN106500628B, CN206132003U, CN211121096U, US10309770B2, KR102096806B1		

### SCANTECH (HANGZHOU) CO., LTD - ABBAS, a.s.

Edisonova 5, 612 00 Brno  
Czech Republic  
Tel.: +420 731 607 392  
E-mail: support@3d-scantech.blog  
Website: www.3d-scantech.blog

**SCANTECH™**

Authorized Distributor

Copyright ©